



AKUROCK

Manifestation of Beauty

Product Catalogue -2024



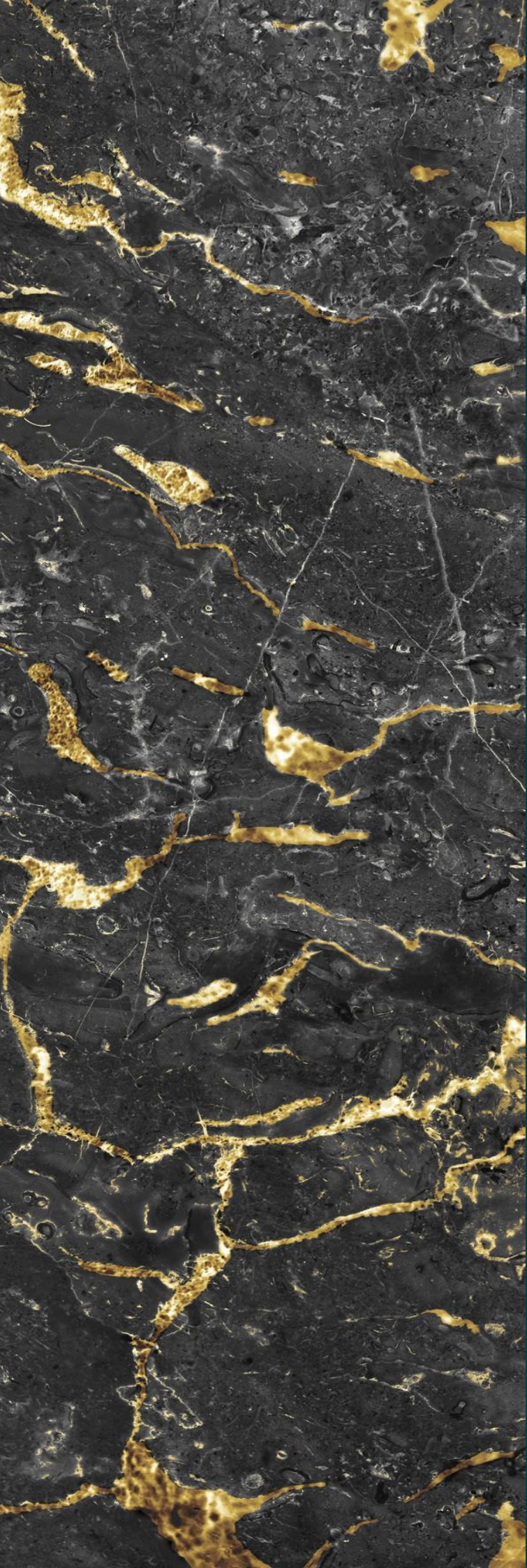


Mining and consumption of construction stones in Iran has a long history. It has been customary to use these stones in the first millennia of civilization in Iran, either as building stones or as decorative stones inside buildings. Remains of the use of such stones in Persepolis, Pasargad, Takht Suleiman and many Sassanid and Islamic buildings are scattered all over the land of Iran. There are ornamental objects made of all kinds of marble, marble, etc., including women's dishes and ornaments, in the museums of Iran and other parts of the world. The decorations inside the historical buildings, which sometimes came out intact from the underground, show the use of the mentioned stones in the decorations inside the building. The exploration, extraction, transportation, cutting, cutting and consumption of decorative and facing stones, which have been carried out traditionally in Iran over time, have undergone a fundamental transformation in recent decades. The main and fundamental manifestation of this development is the use of modern methods in this mining industry, which has brought about general qualitative and quantitative changes in the production and consumption of this group of mineral deposits. Non-explosive extraction methods and extensive use of hard machines are the two recent major developments in Iran's stone industry, which have taken place in the last decade, and each of them in turn has been able to develop the qualitative and quantitative production and consumption of decorative and facade stones.



Omega Company entered the field in 2017 with the aim of producing building stones and by using the latest technology in the production of all kinds of marble and Onyx stones, they glorify their position among builders. Therefore, once again, a step has been taken regarding the ease of selling and sending all kinds of building stones to neighbouring countries, and we are investigating AKUROCK Company in this regard. For this reason, we can say that Omega is one of the first stone production and processing companies that directly sells and ships its products internationally. And for the happiness of our dear customers, while using an experienced staff regarding the current processes and special conditions, it has been taken into account.





Contents:

MARBLE

| | |
|--------------------------|---|
| Dehbid marble..... | 1 |
| Salsali marble..... | 2 |
| Spider marble..... | 3 |
| 3D black marble..... | 4 |
| Golden marble..... | 5 |
| Persian silk marble..... | 6 |
| Black marble | 7 |
| Lashotor marble | 8 |

TERAVERTAIN:

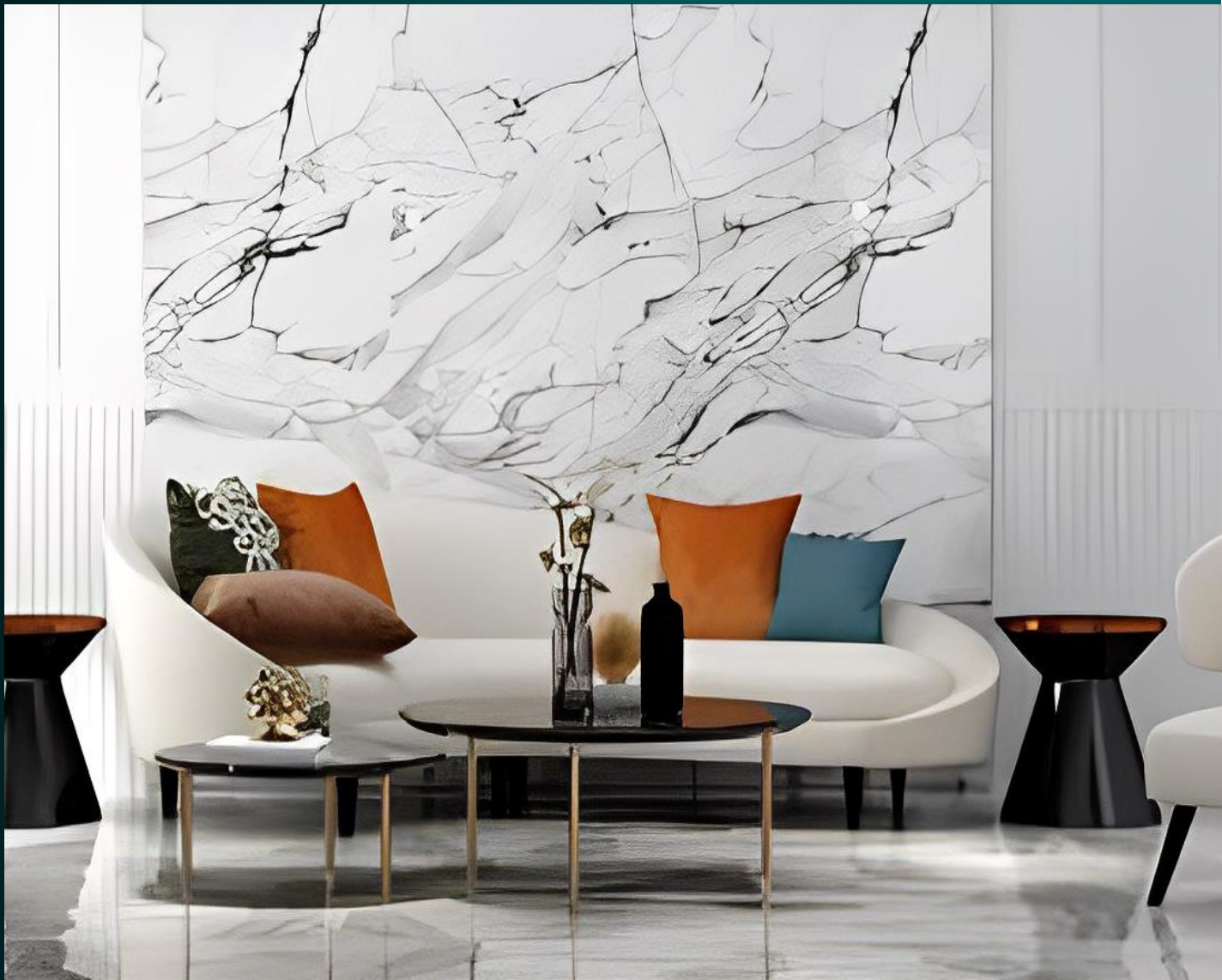
| | |
|-----------------------------|----|
| Haji Abad travertine | 9 |
| Abbas Abad travertine:..... | 10 |
| Persian silk marble..... | 11 |

GRANITE:

| | |
|----------------------------|----|
| Natanze granite..... | 12 |
| Nehbandan granite..... | 12 |
| Toisarkan | 12 |
| Natanze slab granite | 13 |



Marble



Salsali Marble stone:

a stunning and versatile construction stone that combines strength with aesthetic appeal. With a light cream and lilac background adorned with sinusoidal veins, this clay marble is perfect for adding a touch of elegance to any space.

This stone is suitable for high-traffic areas, such as building floors and staircases, meanwhile, Salsali Marble is known for its resilience and durability. Its usage extends beyond the confines of interior facades and walls to include hotel lobbies, kitchen interiors, and commercial and residential units. Experience the durability and beauty of Salsali Marble in your next construction project. Elevate your space with this timeless material that effortlessly combines aesthetics with functionality.

Name: Salsali marble

Size: 400x400 – 600x600- 400x1200 – Slab

Thickness: 15 -18 – 30

Surface: polished

Unit: mm





Dehbid marble stone:

a true marvel of nature. This exceptional marble boasts a captivating white and light cream background, adorned with delicate gray crystal veins resembling scattered deer antlers. Some varieties even exhibit charming pink and light brown spots, adding unique character to each piece. Noteworthy for its remarkable white color, excellent absorbency, and low water absorption, Dehbid Stone stands out among its peers. Its polished surface exudes elegance while maintaining its natural appeal. The versatility of Dehbid Stone knows no bounds. Embrace the allure of Dehbid Stone and experience the epitome of elegance in your living spaces. Explore the range of colors available - from light cream whitish and simple cream to beige cream, patterned cream, and ice flower cream. Each piece of Dehbid Stone is a testament to the craftsmanship of nature, making it a cherished choice for discerning individuals and interior designers worldwide. Elevate the elegance of your space with Dehbid marble.

Name: Dehbid marble
Size: 400x400 – 600x600- 400x1200 – Slab
Thickness: 15 -18 – 30
Surface: polished

Unit: mm





Spider Marble Stone:

a captivating and luxurious choice for your interior design needs. This exquisite stone showcases a stunning combination of burnt brown and black hues, adorned with unique yellow and golden veins that resemble a spider's web. With its visually striking appearance, this marble is sure to make a statement in any space. It is a stone of superior quality, known for its inherent strength, high abrasion resistance, and low water absorption rate. Its compactness and high molecular density contribute to its durability and longevity.

Not only does this marble possess remarkable physical properties, but it also enjoys immense popularity in the market. Ideal for paving and interior building design, Dehbid Spider Marble Stone adds a touch of splendor to any structure. Whether used as flooring in hotel lobbies or stylish residential units, or as wall cladding in lobby spaces, this marble elevates the overall aesthetic with its rich and dark color scheme.

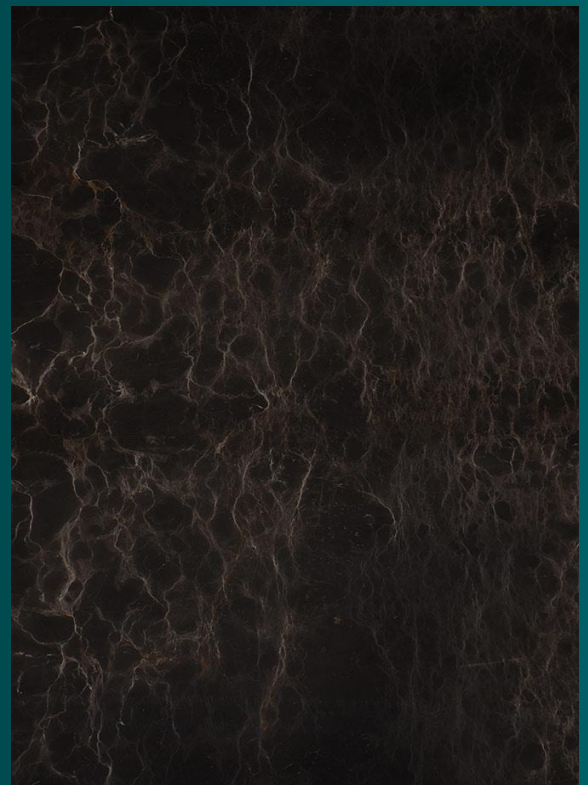
Name: Spider marble

Size: 400x400 – 600x600- 400x1200 – Slab

Thickness: 15 -18 – 30

Surface: polished

Unit: mm





3D Black marble stone:

a true masterpiece that combines elegance and style. This stunning slab, with its dark backdrop and captivating white streaks, has garnered attention both locally and internationally. The unique white patterns create a mesmerizing three-dimensional effect, making it a favorite among architects and designers.

Crafted from the finest materials, this 3D Black marble stone bears a striking resemblance to prestigious stones like Golden Black and Marshall. Its black hue is accentuated by delicate white lines, occasionally adorned with hints of gold. Not only is this stone visually stunning, but it also boasts impressive strength and durability. From high-end hotels to modern kitchens, this stone will elevate any setting with its dark allure and captivating three-dimensional appearance. Transform your space with the timeless beauty of the 3D Black marble stone.

Name: 3D Black marble

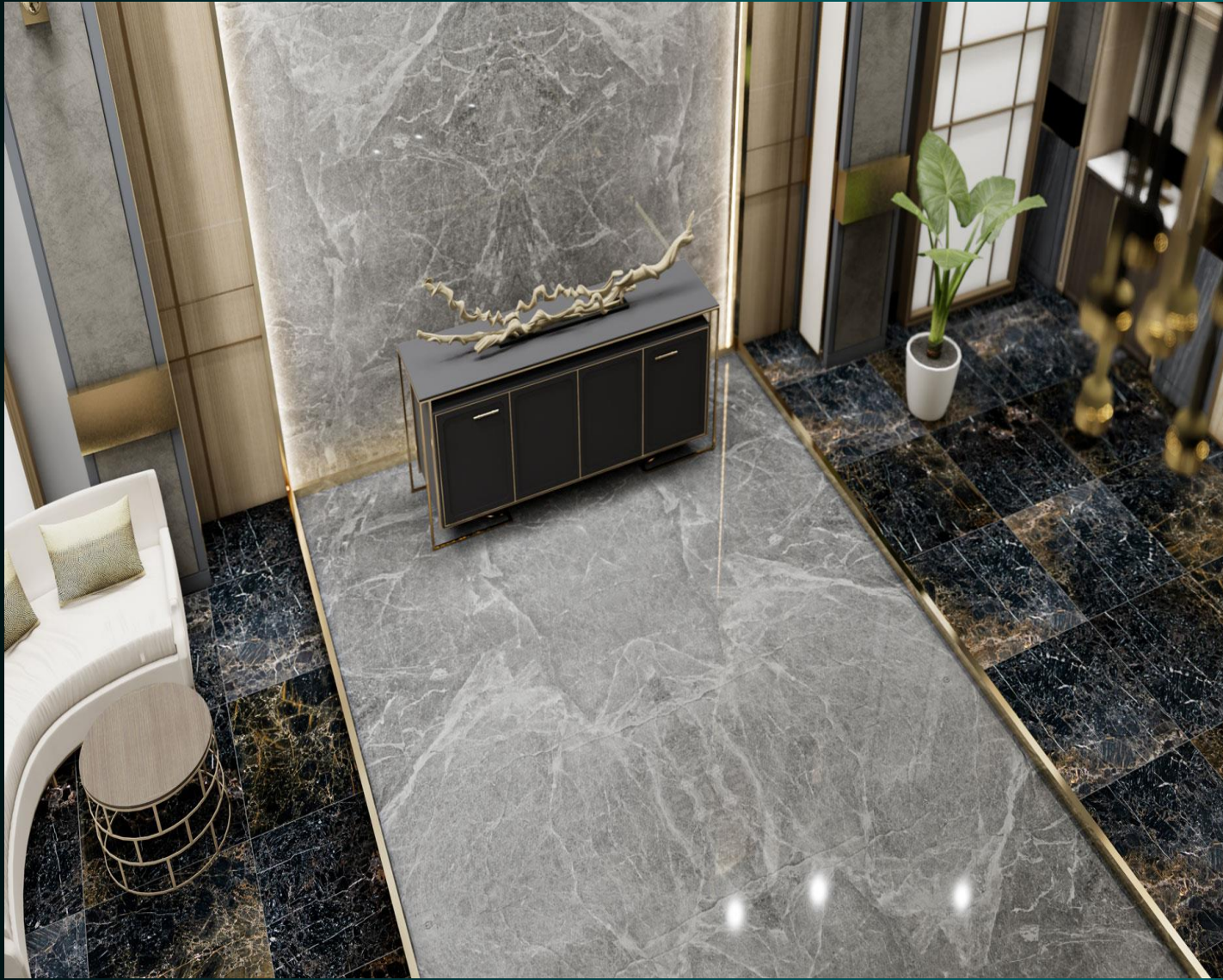
Size: 400x400 – 600x600- 400x1200 – Slab

Thickness: 15 -18 – 30

Surface: polished

Unit: mm

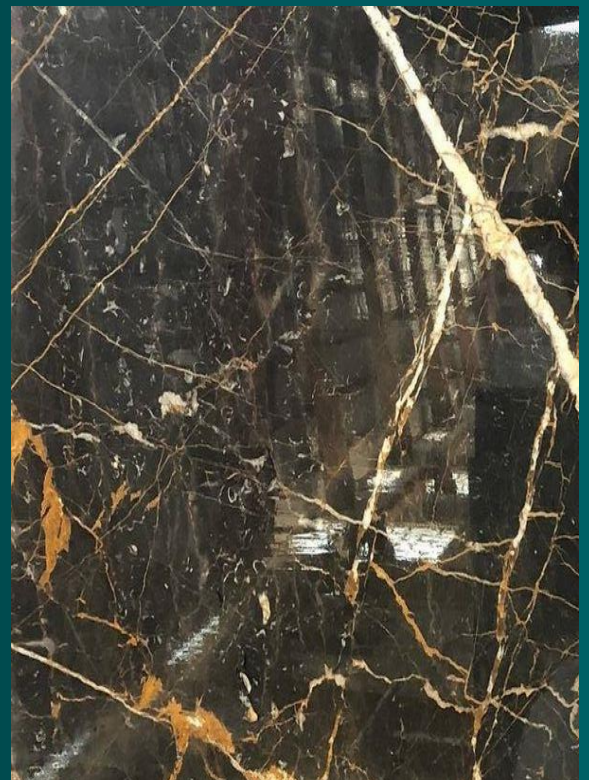




Golden Black marble stone:

This luxurious material is renowned for its natural veins and a color palette that transitions gracefully from black to brown, adorned with stunning streaks of gold and white. Extracted and meticulously processed, this marble slab stone is perfect for elevating the aesthetics of any architectural or interior design project.

Versatile in its applications, Golden Black marble stone adds a touch of opulence to residential complexes, commercial centers, and offices. Elevator interiors, building exteriors, staircases, and kitchen cabinets all benefit from the timeless beauty of this stone.



Name: Golden Black
Size: 400x400 – 600x600- 400x1200 – Slab
Thickness: 15 -18 – 30
Surface: polished

Unit: mm



black marble:

a timeless and elegant choice for your interior design needs. This stunning stone is not only visually striking, but it also boasts impressive durability and adaptability. The rich black hue of black marble adds a touch of sophistication to any space, making it a favorite among designers and architects.

One specific variety of black marble is the Tiho black stone. Its luxurious appeal comes from its smooth polished surface, dark color, and unique white streaks. With Tiho black stone, you can create a luxurious and stylish ambiance in any setting.

Black marble is incredibly versatile and finds its place in various areas of a building. In the kitchen, it can serve as a backsplash, sink, or countertop, adding a striking contrast to other colors in the space. Embrace the allure of black marble and elevate your space to new heights of elegance.

Name Black marble

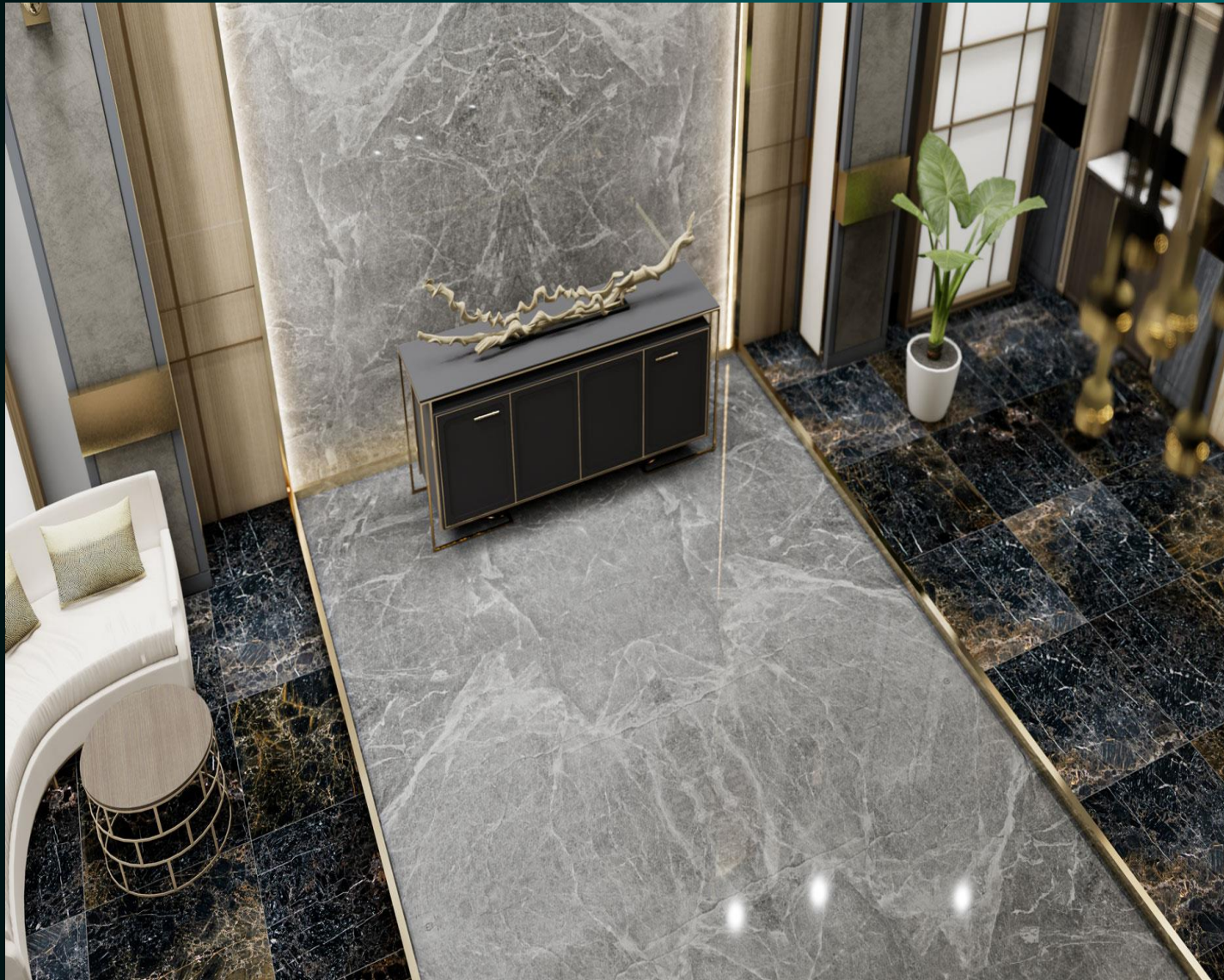
Size: 400x400 – 600x600- 400x1200 – Slab

Thickness: 15 -18 – 30

Surface: polished

Unit: mm





Persian Silk marble:

Persian Silk marble also known as Emperor. This exquisite marble stone hails from the Fars province of Iran and has become a sought-after gem in the world of luxury design. With its captivating light and dark gray color themes, this stone showcases irregular white lines that resemble delicate spider webs, creating a mesmerizing visual effect. But it's not just about its stunning appearance. The Persian Silk slab stone boasts remarkable qualities that make it highly desirable. Its dense texture and flexibility make it versatile for various applications, while its resistance to pressure and abrasion ensures long-lasting durability. Thanks to its low moisture absorption rate, it's a perfect choice for areas exposed to moisture. Its unique beauty and cost-effectiveness make it a popular choice among buyers. Experience true luxury with the Persian Silk slab stone.

Name: Persian Silk marble
Size: 400x400 – 600x600- 400x1200 – Slab
Thickness: 15 -18 – 30
Surface: polished

Unit: mm





Lashtar Marble:

a captivating and versatile natural stone hailing from Iran. Renowned for its striking resemblance to Italy's Petra stone, Lashtar marble is composed of sedimentary limestone, calcium carbonate, calcite, dolomite, and crystal. The result is a stunning range of colors, with the iconic Lashtar variant boasting a deep black hue. Each type of Lashtar marble is distinguished by its background color and the number of elegant white veins that run through it. For an even more visually appealing touch, arrange the stone in a symmetric book match or form match pattern. But Lashtar marble isn't just visually stunning - it's also incredibly durable and resistant to slipping and sliding. With low water absorption, color stability, high compressive strength, and resistance to weathering and erosion, this natural stone surpasses expectations. Its applications are endless, from interior and exterior walls to floors, parking lots to bathrooms, villas to pool areas.

Name: Lashotor marble

Size: 400x400 – 600x600- 400x1200 – Slab

Thickness: 15 -18 – 30

Surface: polished

Unit: mm





Teravertaine

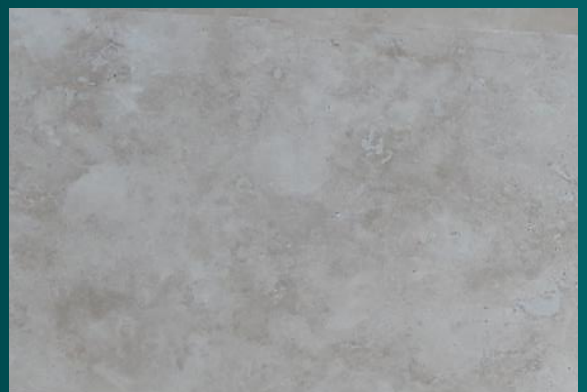


Haji Abad travertine:

Haji Abad travertine stone is one of the best stones for interior and exterior facades of buildings. Are you looking for bright and quality facade stone? We suggest you to use Haji Abad travertine stone. Haji Abad travertine is one of the most suitable stones for facade construction projects. One of the unique features of this stone is that it has a beautiful and attractive appearance and is completely uniform in color. This stone is mostly available in bright colors. This stone has much less porosity than other stones in Yazd city. This stone is processed with very high quality. Another very good feature of Hajjabad travertine stone is its resistance to weather conditions. Therefore, they have shown high resistance against sunlight, humidity and different weather conditions. Haji Abad travertine stone is smooth and transparent and can be polished well. This feature has caused this stone to be used more in facades of buildings.

Name: Haji Abad travertine
Size: 400x1200 - 300x1200
Thickness: 16 -18
Surface: polished

Unit: mm





Abbas Abad travertine:

Abbas Abad travertine stone is the only white travertine stone in the world of construction; It is famous. This stone gives a special beauty and charm to the exterior of the building. Abbasabad travertine stone has bright and attractive colors. Abbasabad travertine stone is mostly white in color. The whiteness of this stone will give your building a special splendor. Abbas Abad travertine has a very high adhesion to mortar. This stone has a high resistance to weather factors. Abbas Abad travertine stones have a strong bone texture and also have high tensile and bending resistance. This stone shows high resistance against wear and tear. Very low porosity is one of the hallmarks of this stone. The voids on the surface of the stone have caused; Insulation for heat and sound.



Name: Abbas Abad travertine
Size: 400x1200 - 300x1200
Thickness: 16 -18
Surface: polished

Unit: mm



Dareh Bukhari travertine:

Dareh Bukhari travertine is one of the best travertine stones in today's Iranian market. This stone is often used for building facades. This stone has low water absorption, high density and high polishability. This stone is exported to other countries of the world with its great advantages and characteristics. The color of Dareh Bukhari travertine is white, honey and chocolate. Dareh Bukhari travertine stone in the main and external facades of structures, especially stylish and modern structures, in classic and modern facades and very luxurious execution in different architectural styles, in the landscaping of the interior of the building, in the construction of decorative and stunning products, in the lobby of buildings and hotels It is used in the corridors and walls of the stairs of the building.

Name: Dareh Bukhari travertine

Size: 400x1200 - 300x1200

Thickness: 16 -18

Surface: polished

Unit: mm



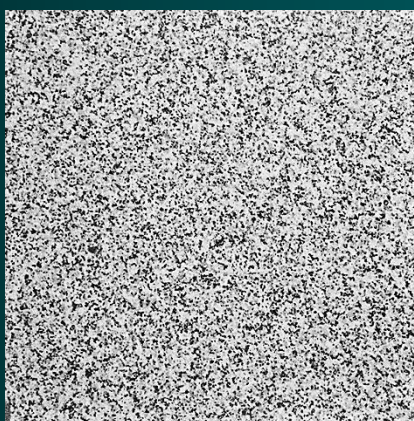


Granite

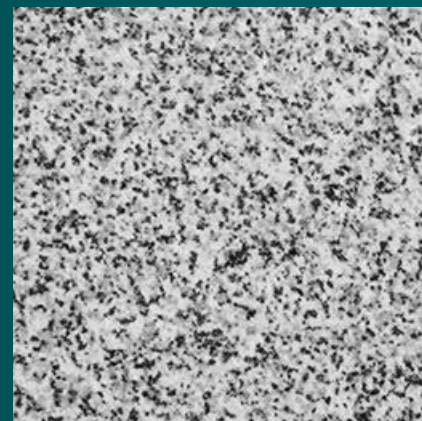
This stone is a type of igneous rock and has very high strength. Its primary components are the molten materials inside the volcanoes, which after the eruption, take the form of the current state. This type of igneous rock is mostly divided according to the type of coloring. Their most important categories include black, gray, red and chocolate granite. One of the most important features is that the possibility of scratches on them is very low, and that is why it is very common to use it in high-traffic places such as stairs and floors. Also, igneous rocks show good resistance against water and chemicals, and the possibility of water penetration in their tissue is very low, and injury and damage due to impact rarely happens in them.



Name: Natanz black granite
 Size: Slab
 Thickness: 16 -18
 Surface: polished
 Unit: mm



Name: Natanz white granite
 Size: Slab
 Thickness: 16 -18
 Surface: polished
 Unit: mm



Name: Nehbandan white granite
 Size: Slab
 Thickness: 16 -18
 Surface: polished
 Unit: mm



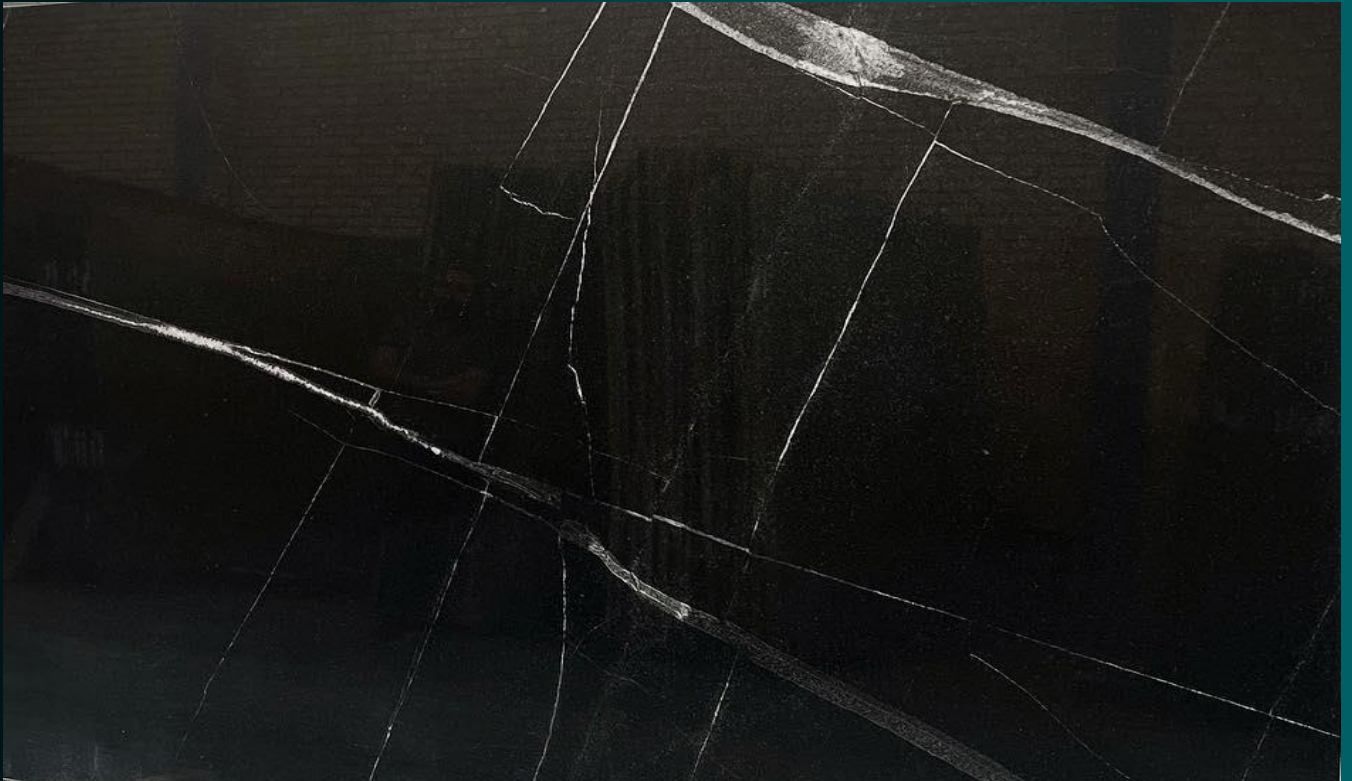
Name: Nehbandan orange granite
 Size: Slab
 Thickness: 16 -18
 Surface: polished
 Unit: mm



Name: Nehbandan cream granite
 Size: Slab
 Thickness: 16 -18
 Surface: polished
 Unit: mm



Name: Toisarkan granite stone
 Size: Slab
 Thickness: 16 -18
 Surface: polished
 Unit: mm



In the production of Natanz black granite slabs, if the appropriate equipment is used and the sub operation is carried out correctly, it will bring high quality and stunning beauty. The positive features of this product have caused this stone to become a serious competitor to the stones of other countries, one of the suitable options for use in luxury buildings in the focus of attention of designers and builders.

Name: Natanz black granite

Size: slab

Thickness: 18

Surface: polished

Unit: mm



AKUROCK

2024 STONE CATALOGUE

Contact us:

Email: info@akurock.com

www.akurock.com

tel; 0098- 2233546